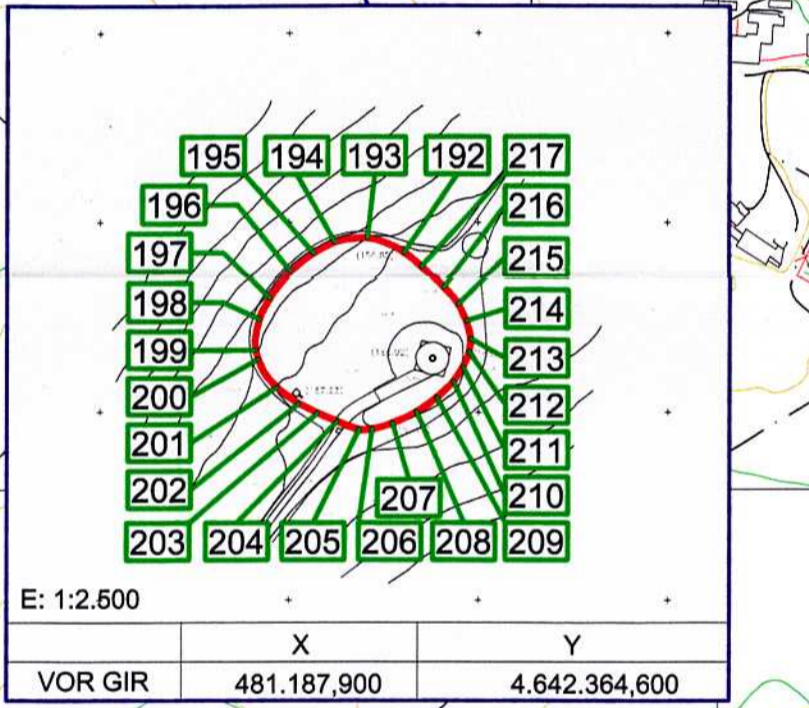
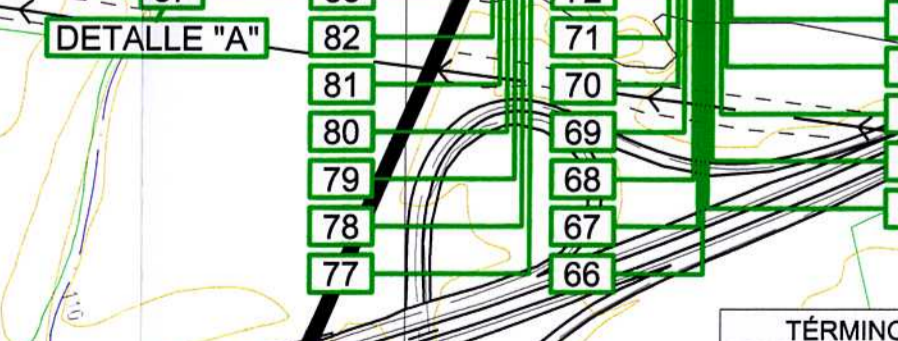
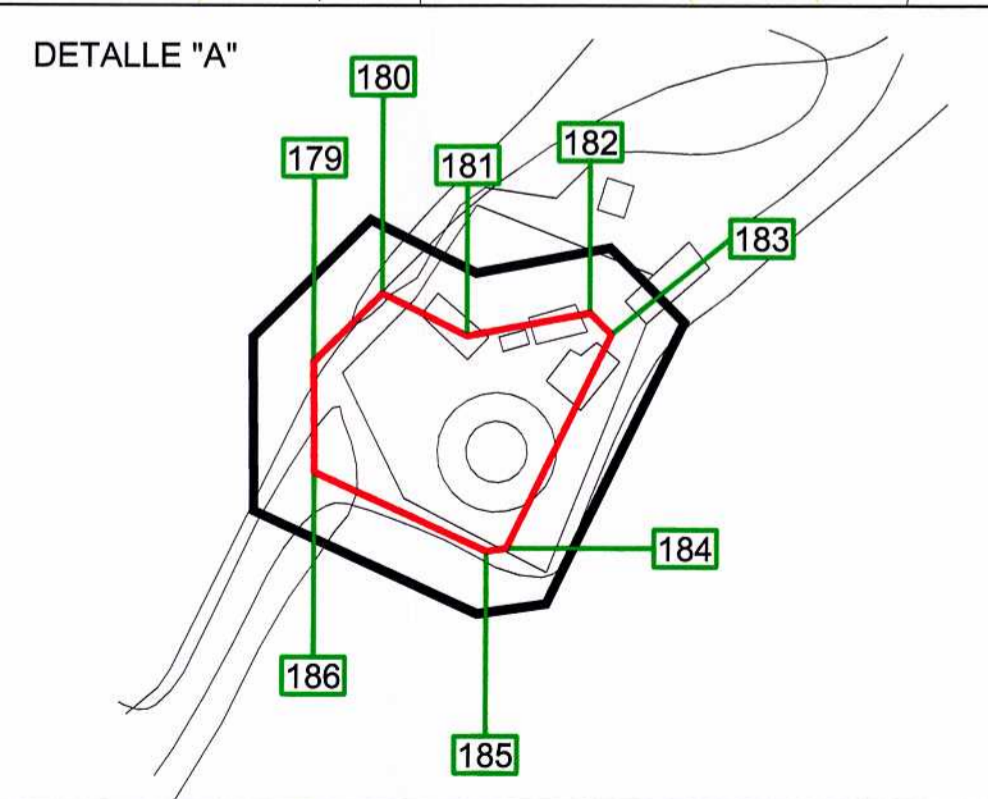


RECINTO N°1		RECINTO N°2		RECINTO N°3		RECINTO N°4		RECINTO N°5			
X	Y	X	Y	X	Y	X	Y	X	Y		
1	479.802.6306	4.637.591.8347	34	480.905.0263	4.640.851.4759	67	480.897.9860	4.638.814.7488	100	480.192.1254	4.637.953.3263
2	479.802.6306	4.637.591.8347	35	480.928.5321	4.640.596.9353	68	480.898.7277	4.638.813.4016	101	480.068.5342	4.637.883.8577
3	479.776.0763	4.637.667.3509	36	480.938.6712	4.640.540.7392	69	480.901.0179	4.638.758.8123	102	480.048.1413	4.637.734.8577
4	479.787.4681	4.637.707.2480	37	480.921.0832	4.640.456.2819	70	480.902.7366	4.638.780.6533	103	479.983.3677	4.637.783.4182
5	479.754.4815	4.637.716.0596	38	480.904.8799	4.640.435.3059	71	480.800.7724	4.638.791.6985	104	479.995.4115	4.637.659.0099
6	479.781.4379	4.637.811.0749	39	480.767.9718	4.638.951.2775	72	480.800.0359	4.638.801.7381	105	479.919.5998	4.637.669.5296
7	479.711.6298	4.637.831.0077	40	480.689.5366	4.638.675.0307	73	480.898.2338	4.638.807.2468	106	479.908.1347	4.637.629.3687
8	479.711.6298	4.637.961.5353	41	480.950.5956	4.639.601.0873	74	480.928.1820	4.638.739.8096	107	479.864.8048	4.637.642.3097
9	479.746.2399	4.637.968.8114	42	481.069.5813	4.639.981.8441	75	480.940.1100	4.638.759.8300	108	479.844.9387	4.637.579.7518
10	480.537.0469	4.640.738.2441	43	481.091.9469	4.639.554.8588	76	480.945.1300	4.638.785.9236	109	479.802.6306	4.637.591.8347
11	480.537.0469	4.640.740.2635	44	481.028.9258	4.639.207.0343	77	480.993.9129	4.638.729.3965			
12	480.547.0027	4.640.784.0489	45	480.993.2110	4.639.127.5282	78	480.999.4008	4.638.721.2991			
13	480.571.5018	4.640.787.0160	46	480.952.9041	4.639.055.2431	79	480.997.5964	4.638.719.1608			
14	480.599.8891	4.640.787.4411	47	480.917.8296	4.638.989.1149	80	481.007.7577	4.638.709.2281			
15	480.614.3451	4.640.787.4411	48	480.900.1919	4.639.957.4422	81	481.009.4220	4.638.707.1608			
16	480.618.8406	4.640.805.8169	49	480.885.8769	4.638.930.6735	82	481.011.1215	4.638.704.2875			
17	480.688.5328	4.640.817.4128	50	480.877.4224	4.638.910.1608	83	481.011.6824	4.638.700.6780			
18	480.725.4819	4.640.800.7227	51	480.875.5775	4.638.902.2582	84	481.012.3135	4.638.695.4564			
19	480.750.9460	4.640.891.4708	52	480.872.1707	4.638.891.7837	85	481.014.1010	4.638.687.7819			
20	480.771.8549	4.640.887.6386	53	480.869.4914	4.638.886.7445	86	481.014.0944	4.638.686.9892			
21	480.761.2013	4.640.852.8127	54	480.860.9105	4.638.881.7487	87	481.014.0494	4.638.675.9819			
22	480.777.5140	4.640.846.9469	55	480.854.0157	4.638.874.5774	88	481.011.2123	4.638.667.9105			
23	480.773.8354	4.640.836.9204	56	480.849.3231	4.638.865.8046	89	481.007.1205	4.638.659.5516			
24	480.758.1699	4.640.842.3109	57	480.847.1844	4.638.856.0883	90	480.990.4531	4.638.629.8791			
25	480.750.4420	4.640.832.8458	58	480.847.7058	4.638.845.1561	91	480.971.5921	4.638.663.3870			
26	480.766.4834	4.640.818.8808	59	480.851.0004	4.638.836.7515	92	480.923.8407	4.638.602.0472			
27	480.763.7657	4.640.809.2570	60	480.856.6791	4.638.828.5790	93	480.875.0386	4.638.411.1181			
28	480.749.6189	4.640.813.2520	61	480.864.3557	4.638.822.2504	94	480.824.2719	4.638.318.6945			
29	480.746.0520	4.640.801.1303	62	480.873.4803	4.638.816.2397	95	480.722.8437	4.638.130.5300			
30	480.744.1863	4.640.795.0205	63	480.883.3113	4.638.816.9471	96	480.651.5780	4.638.995.8713			
31	480.832.6902	4.640.777.9788	64	480.893.1710	4.638.816.1770	97	480.396.5843	4.638.071.3403			
32	480.834.6456	4.640.737.7116	65	480.895.1294	4.638.817.4608	98	480.237.8375	4.638.113.8631			
33	480.871.3479	4.640.708.9202	66	480.896.6141	4.638.816.2971	99	480.201.5885	4.637.986.7058			

PARCELA NDB L G	
X	Y
187	480.994.5500
188	481.052.1300
189	481.066.3400
190	481.008.7000
191	481.008.7300
192	480.994.5500

PARCELA VOR GIR	
X	Y
192	481.141.0800
193	481.142.0200
194	481.144.7500
195	481.150.3600
196	481.156.3000
197	481.162.0500
198	481.170.7400
199	481.180.4800
200	481.185.0700
201	481.190.7000
202	481.194.5000
203	481.196.6700
204	481.197.8100
205	481.197.4500
206	481.195.7000
207	481.193.3200
208	481.188.9100
209	481.183.9900
210	481.177.2800
211	481.171.8300
212	481.168.4700
213	481.162.8600
214	481.157.5700
215	481.152.5700
216	481.146.8800
217	481.141.8200
218	481.141.0800



— LÍMITE DE LA ZONA DE SERVICIO PROPUESTA
 - - - LÍMITE MUNICIPAL
 ● AYUDAS RADIOELÉCTRICAS

CARTOGRAFÍA
 Coordenadas: UTM ED50
 Fuente: Aena
 Año: Junio 2004
 Escala: 1:5.000

NG	CONCEPTO	FECHA	POR
REVISIONES			
DIRECCIÓN DE PLANIFICACIÓN DE INFRAESTRUCTURAS			
AEROPUERTO DE GIRONA			
PLAN DIRECTOR			
ZONA DE SERVICIO PROPUESTA COORDENADAS UTM			
HOJA N°	PLANO N°	FECHA	EDICIÓN
	4.4	MAYO 2006	1:5.000